



Int'l Design & Property Development Inc.

With regards to the reports given by the Engineers of Wind International Design and Property Development, the deadline of Jumeirah Lakes Towers is end of the year 2008.

WIND TOWER I

- Casting of the vertical elements between L3-L2 is under progress
- Core wall of L3-L2 shuttering & formwork in progress
- Spandrel steel work elements in progress
- Cleaning of L1 (B6) finished & ready for masonry work, all shutters removed.



Wind Tower I

WIND TOWER II

- Balance of vertical elements L1-L2 casting done
- Part of climbing shutters arrived to Wind II construction site
- Casting of vertical in progress



Wind Tower II

***** WE ARE PROUD TO ANNOUNCE THAT OUR COMPANY HAS BEEN LISED AMONG THE APPROVED LIST OF DEVELOPERS IN U.A.E. CODE No. 254, ESCROW ACCOUNT WILL BE OPEN VERY SOON.**

For more detail go to the following link:

http://dubailand.gov.ae/ld_website/Application/developer_list.pdf

To view more videos go to:
www.windtower.net

Pictures of the week



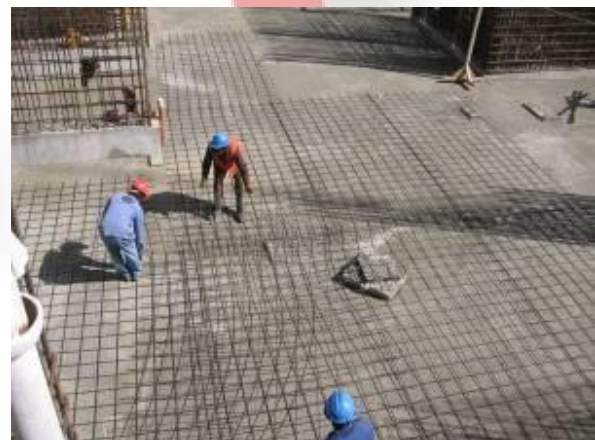
Casting in Wind Tower II



Wind Tower II



Casting of the Ramp Wind Tower II



Wind Tower II



Leveling of Wind Tower II



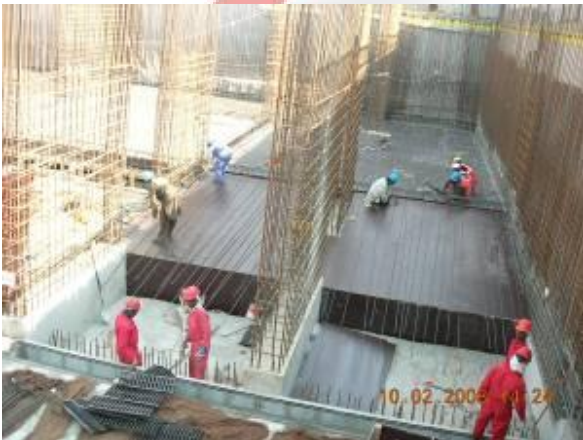
Wind Tower II



Preparing Wind I for Casting of B3



B3, Wind Tower I



Wind I reinforcement bar fixing



Cleaning of L1, B6



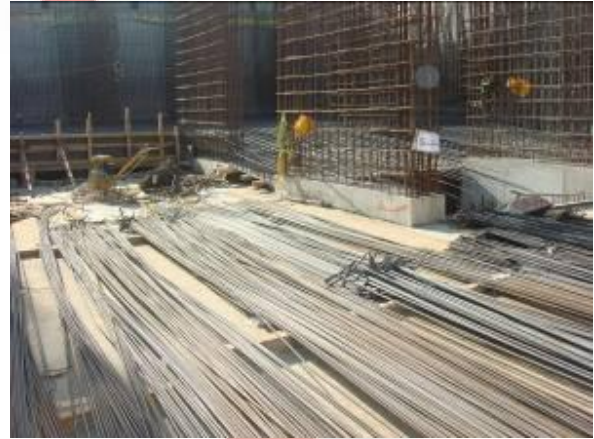
Shutters arriving to the construction site



Wind Tower I



Preparing for casting of B4L3, Wind Tower I



Wind Tower II



Scaffolding of L2B5, Wind Tower I

For more picture & videos kindly click on the links below:

<http://www.faravand.org/wind%20process/process%20page.htm>
<http://www.faravand.org/wind%20process/process%20pageII.htm>