



Int'l Design & Property Development Inc.

We had discontinued the newsletter update for some time since we gave priority to our websites and forums; but due to high demand, we have decided to continue the newsletter from where we left off.

WIND TOWER I

- Slab of 17.21 has been approved by JAFZA and is awaiting concrete.
- Prefabricated steelwork installation for vertical elements of 17.21 to 20.17 has been completed.
- Prefabrication of steel works for vertical elements level 20.17 to 23.13 has been completed.
- Cut and bent steel for vertical elements level 23.13 to 26.09 and 26.09 to 29.05 has been delivered to the site for prefabrication.



Wind Tower I

WIND TOWER II

- DOKA formwork system has arrived on site and is being set up to be used for slab of 20.40.
- Formwork of slab 20.40 will be completed by Tuesday approximately. The following slabs are planned to take less time.
- Steelwork of vertical elements have been completed to level 23.41.
- Prefabrication of steel works for vertical elements has been completed for up to level 26.42 to 29.43.
- Cut and bent steel for vertical elements level 29.43 to 32.44 has been delivered to the site for prefabrication.



Wind Tower II

***** WE ARE PROUD TO ANNOUNCE THAT OUR COMPANY HAS BEEN LISTED AMONG THE APPROVED LIST OF DEVELOPERS IN U.A.E. CODE No. 254, ESCROW ACCOUNT HAS BEEN OPENED**

For more detail go to the following link:

<http://www.farayand.ae/Wind%20Photo/scan0002.jpg>

http://dubailand.gov.ae/ld_website/Application/developer_list.pdf

To view more videos go to:

www.windtower.net

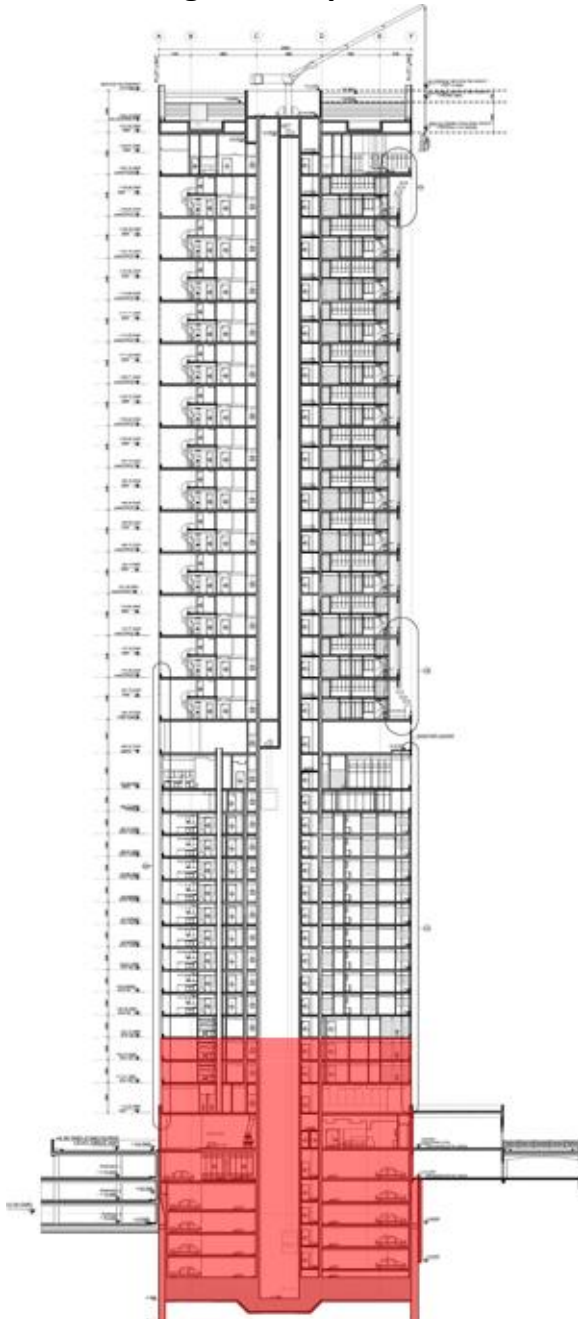
<http://www.youtube.com/WindSpokesperson>

For more picture & videos kindly click on the links below:

<http://www.farayand.org/wind%20process/process%20page.htm>

<http://www.farayand.org/wind%20process/process%20pageII.htm>

Wind Tower I Progress Graph



Wind Tower II Progress Graph

